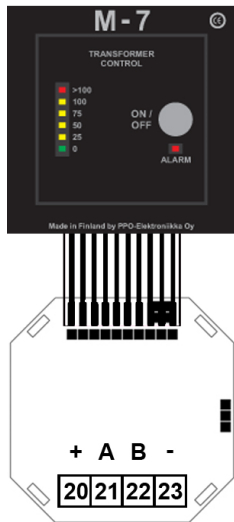


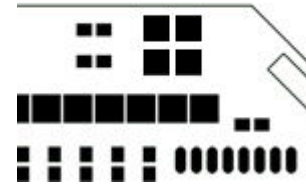
TRANSFORMER MONITOR M-7

- While MEV-7 overseeing the transformer load, the green indicator light on the M-7 monitoring instrument will flash to indicate an operational data connection and the LED bar will indicate the load level on the transformer.
- If the load exceeds the set value, the MEV-7 alarms, relay ALR 2 contact 5-7 opens, the red warning light activates on the M-7, the LED bar shows the load on the transformer, and the buzzer provides an audible alarm.
- The topmost red indicator light on the LED bar indicates a current alarm.
- If the transformer temperature exceeds the set value, the MEV-7 gives an alarm as described above, the red warning light on the M-7 activates, and a buzzer provides an audible alarm.
- The buzzer can be switched off using the ON/OFF button.
- When the fault is cleared, the MEV-7 resets automatically, the alarm indicator light goes out, and the green indicator light continues to flash.
- After reset, the buzzer will revert automatically to alarm readiness.

CONNECTION INSTRUCTIONS

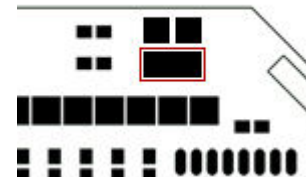


- The M-7 is intended for installation in a 1-unit device box or for panel mounting.
- Cabling CAT5e shielded twisted pair or better.
- Power supply 12 VDC.
- Dimensions with the mounting frame (W * H * D) 85 * 85 * 35 mm (without frame 70 * 70 * 35)
- Connectors 20, 21, 22, 23 are coupled to corresponding terminal numbers on the MEV 7.
- The cable shield is connected only at the end of the MEV-7 to the PE connector.
- A maximum of 3 M-7 instruments can be connected to MEV-7.
- Jumpers are used to install addresses 1-3 for the devices.
- NOTE! Modules operating at the same address on the same MEV-7 can cause undesired operation.



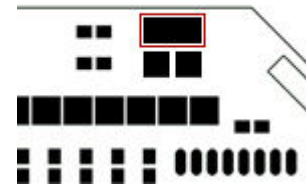
Address 1

Jumpers: 1 and 2 detached.



Address 2

Jumpers: 1 detached and 2 attached.



Address 3

Jumpers: 1 attached and 2 detached.



Disabled

Jumpers: 1 and 2 attached.

WARRANTY

This device carries a 12-month warranty. The warranty applies to defects in raw materials and manufacturing. The warranty period begins on the date when the device is purchased. In connection with possible warranty repairs, please submit your purchase receipt or equivalent proof of purchase date. This warranty is void if anyone other than an authorized maintenance company takes corrective action during the warranty period. The warranty does not cover any indirect costs. The device will be sent for maintenance at the customer's expense and returned to the customer at the manufacturer's expense.